

Smart Junior

Simplest video-tracking ever!



SOFTWARE OVERVIEW

Smart JUNIOR has been specifically designed for customers with very precise interest and who need concise meaningful reports.

With the more competitive price in the market, Smart JUNIOR fulfils all the basic functions of a classical video-tracking system.

Smart JUNIOR comes with ready-to-use configurations, run panel and data reports targeted to specific standard experiments facilitating testing for beginners. It represents the finest solution for completing molecular and cellular studies by standard behavioral analysis. It is also perfect alternative for emergent markets.

With Smart JUNIOR's expandable software platform, new ready-to-use protocol configurations can be easily plugged-in to expand the behavioral research system to accommodate your growing scientific demands.

Key Features

- User-friendly and economical video-tracking
- Ten steps and you're done!
- Ready-to-use configurations
- Provides concrete meaningful data
- Innovative tool for trial organization
- Plug-in Experimental Modules

APPLICATIONS

ANXIETY - Open Field, Elevated Plus Maze -
LEARNING & MEMORY - Morris Water Maze, T-Y
Maze - ADDICTION & REWARD - Conditioned Place
Preference

Smart JUNIOR

SIMPLE AND POWERFUL

Perform an experiment, not only a track!

An innovative Scheduler tool allows users to manage the subjects and trials in different phases and sessions for an easy retrieval and organization of the final data. Succinct graphs provide a direct visualization of the results obtained from the different experimental groups.

Using experimenter's criteria

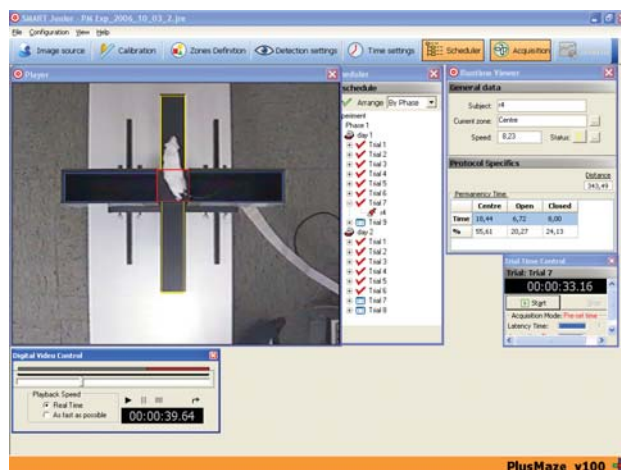
User-adjustable thresholds to accurately detect animal behavior according to user-established criteria. The thresholds originally set can be changed and the experiment replayed to obtain a new set of data.

Advanced technology

Zone-dependent lighting/contrast settings for optimizing animal detection in low-contrast conditions. Neuroscience-adapted smoothing technology

Wide-range of image sources

Webcam, Digital Video Firewire/USB Digital Camera, Analog Camera (needs analog/digital video converter). Any device compatible with Microsoft® Windows Image Acquisition (WIA).



Available experimental modules



Open Field



Plus Maze



Water Maze



T-Y Maze



Place Preference

COMPUTER REQUIREMENTS

Windows™ XP compatible computer system. 2 GHz Hard disk, 512 MB of RAM. 256 colors palette Graphics Card for 800 x 600 pixels, 32-bit true color RGB display.

More Experimental Modules are coming soon !

Radial Arm Maze, Black & White Box, Object Recognition test, Forced Swimming Test ...

ORDERING INFORMATION

	Smart JUNIOR	76-0029	Smart Junior platform (needs Experiment modules)
	SJWM	76-0255	Water maze Experiment Module
	SJPM	76-0256	Plus-maze Experiment Module
	SJOF	76-0257	Open-field Experiment Module
	SJPP	76-0415	Place Preference Experiment Module
	SJTY	76-0416	TY maze Experiment Module
OPTION	SJTLS	76-0270	Telemetric Switch (remote start/stop switch)
OPTION	PC or Laptop		Upon customer request
OPTION	CAMWEB	76-0259	Logitech Quickcam Express
OPTION	CAMWEB2	76-0260	High Resolution WebCam
OPTION	CONVANAUSB	76-0262	Video converter (analog/digital)
Other accessories: analog camera, mazes... Contact your nearest dealer			

DOWNLOAD
15 days
FREE TRIAL
at Panlab web site



Contact us for additional information

Panlab s.l.u.

C/Energía, 112
08940 Cornellà
(Barcelona) SPAIN

Phone: +34 934 750 697 (Int.)

Phone: 934 190 709 (Dom.)

Fax: +34 934 750 699

info@panlab.com

www.panlab.com

Distributed by: